

## "Heron" Multi Them Energy Educational Park (MTEEP) valuation and traffic report (10/2022 – 06/2023)

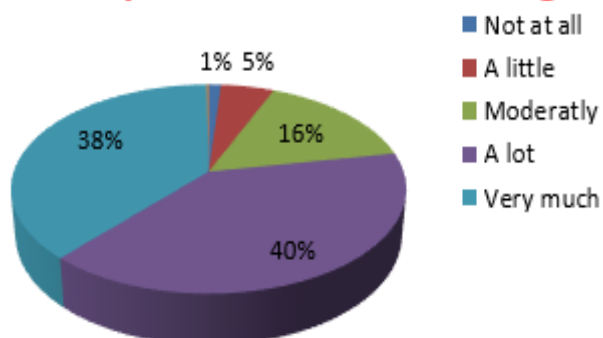
The "Heron" Multi Them Energy Educational Park (MTEEP) during the current period (academic year 2022-2023) showed significant traffic. During the operation of the park and according to the recorded data, hundreds of students, teachers and visitors attended the guided tour of the Park's facilities. More specifically, the Park was visited by 9 Primary Schools, 4 Middle Schools, 4 High Schools, as well as a Scout Group. The age of the visitors starts from 10 years (5th and 6th grade students) and extends to all age groups (Table 1).

**Table 1: Categories of visitors**

Visitors	Number of schools	Age group	Number of Visitors	Number of completed questionnaires
Primary Schools	9	10-12	352	326
Middle Schools	4	13-15	123	87
High Schools	4	16-18	108	73
Scouts	1	12-18	8	8
Teachers	-	18+	42	14
<b>TOTAL</b>	18	-	633	508

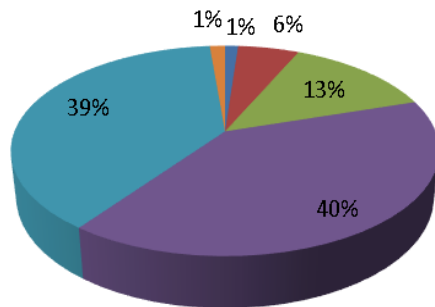
Based on the completed questionnaires given after the tours, the following charts are obtained regarding the degree of satisfaction of the visitors from their experience at the Park. The results of the data processing reflect the positive image that the visitors gain at the end of their visit to the MTEEP.

### 1. Did you find the visit interesting?

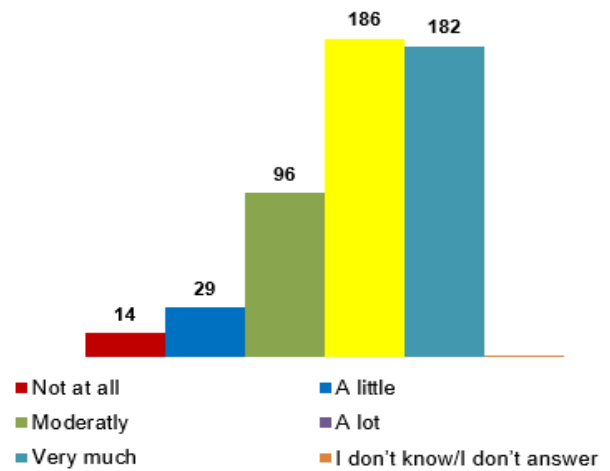


## 2. Was the presentation understandable?

- Not at all
- A little
- Moderatly
- Very much
- A lot
- I don't know/I don't answer

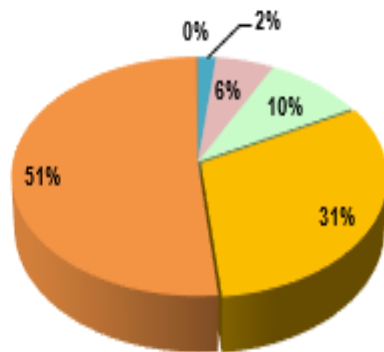


## 3. Do you think you have gained a clearer picture of the forms and uses of Renewable Energy Sources?



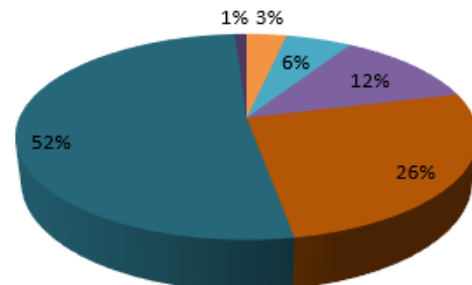
## 4. Did you like that the event was held in the "Heron" Park?

- Not at all
- A little
- Moderatly
- A lot
- Very much
- I don't know/I don't answer



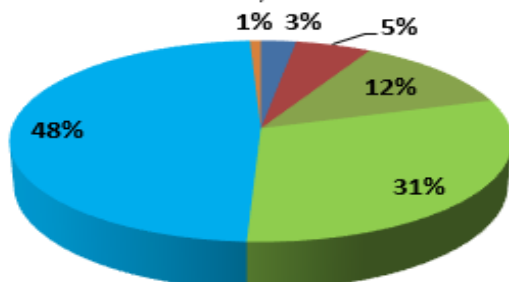
## 5. Do you think it is positive for the school to participate in such activities?

- Not at all
- Moderatly
- Very much
- A little
- A lot
- I don't know/I don't answer

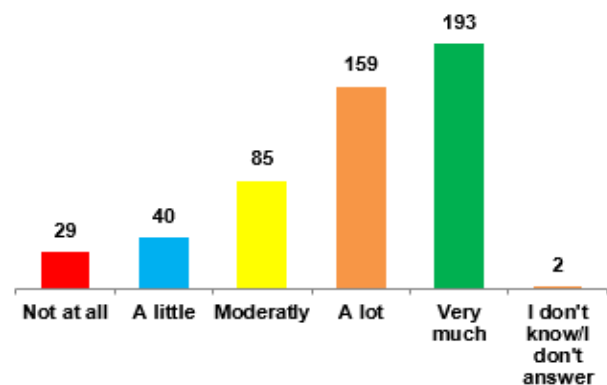


## 6. Do you think it's positive for the university to organize and participate in such activities?

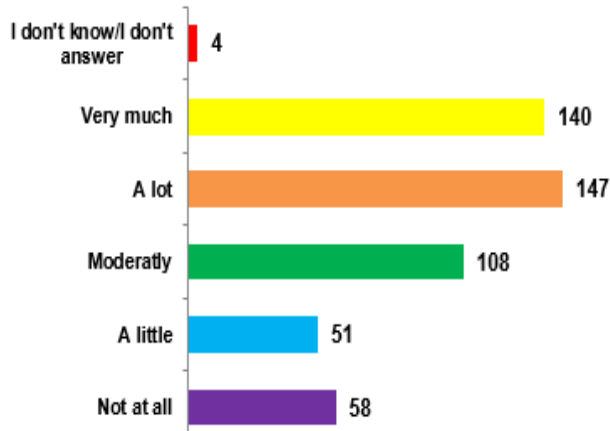
- Not at all
- A little
- Moderatly
- A lot
- Very much
- I don't know/I don't answer



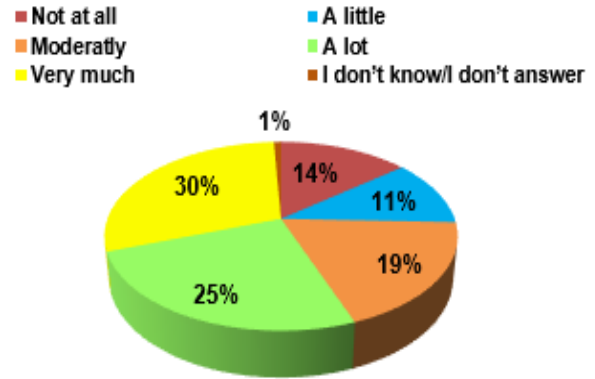
## 7. Would you be interested in participating in this type of action again?



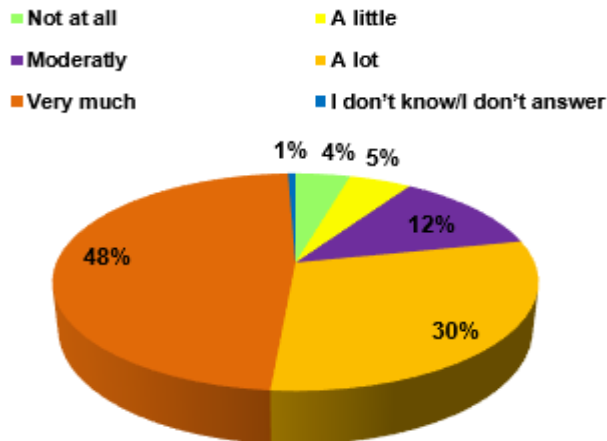
**8. Do you think it is positive for the school to involve parents and carers in its activities?**



**9. Do you think it is positive for parents to participate with their children in educational activities?**



**10. Would you recommend that students participate in similar activities in the future?**



**11. Would you recommend that parents participate in similar activities in the future?**

